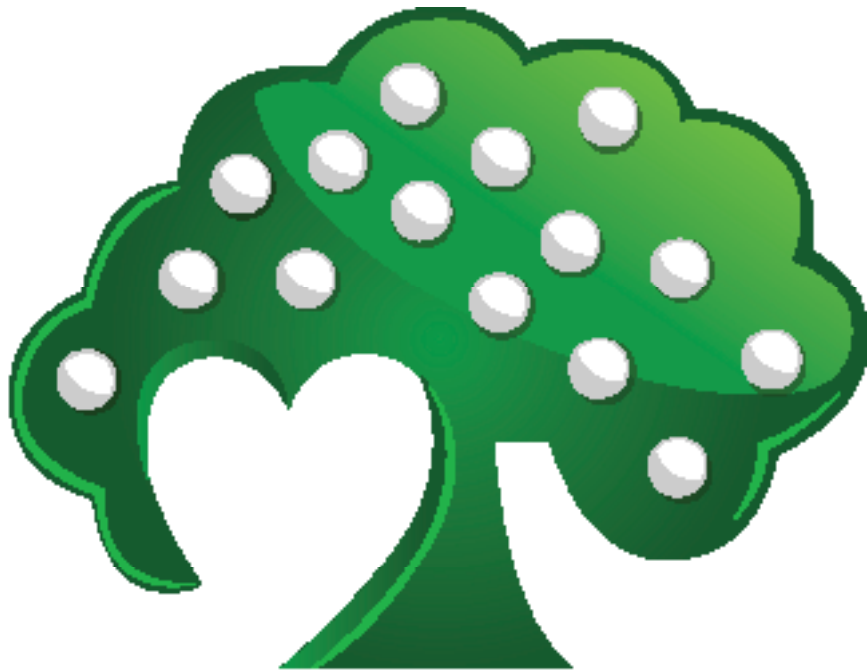




# HARVEST HOPE FOOD BANK

## 2016 Annual Report





# HARVEST HOPE FOOD BANK

*To provide for the needs of hungry people by gathering and sharing quality food with dignity, compassion, and education.*

## Table of Contents

Mission.....	p. 3
Board of Directors.....	p. 4
Meeting the Need.....	p. 5
Facilities.....	p. 6
How We Work.....	p. 7
Donations.....	p. 8
Volunteers.....	p. 9
Child Feeding.....	p. 10
Senior Feeding.....	p. 11
Mobile Food Pantries.....	p. 12
Hunger Study.....	p. 13
Financials.....	p. 14
Agency Relations.....	p. 16

## A Continuing Mission to Meet the Meal Gap...

Thank you for your support of Harvest Hope Food Bank and for taking the time to learn more about why our mission is so critical to hundreds of thousands of South Carolinians. In this Annual Report you will get a glimpse into the work we do to provide meals for children, seniors, families, and the multitude of others we serve on a daily basis. Across our 20 counties, we serve over 50,000 meals a week, helping to reduce hunger and giving hope to those in need.

Our mission is about more than just putting food on a plate. It's about providing hope and stability to a family struggling with an unexpected crisis, making sure a senior can enjoy their retirement and not forcing them to choose between food and medicine, ensuring that a child looks forward to the holidays and doesn't dread them because they know there will be no school provided meals.

As the CEO and the Board Chair of this large, and growing, non-profit, it's amazing to look back at how we started off 36 years ago as a vision and a few individuals dedicated to helping the hungry. Now we've grown into a multi-million dollar organization that provides millions of meals a year to the most vulnerable among us.

As we look back, however, we must continue to look forward. As a member of Feeding America, the largest hunger relief organization in the country, we have made a commitment to close the meal gap by 2025. This means we will need to have the resources and the infrastructure to more than double the number of meals we provide over the next eight years. This is a huge challenge, but one which we are looking forward to meeting head on.

As an example of our ability to respond to trials, we need only to look back to October 2016. Once again, a natural disaster struck our state, this time in the form of Hurricane Matthew and the flooding which followed. Harvest Hope was again called upon by our community to provide for those whose lives had been torn apart by a catastrophe. We provided well over 1.3 million meals in response to the hurricane, and our response continued even months after the event.

Through all the challenges and growth we have experienced through the years, we have always stayed committed to our mission of providing quality food with dignity, compassion, and education. With the support of our volunteers, our staff, and our community, we look forward to the future and we give you our most heartfelt thanks and blessings.

Yours in hope,



**Denise Holland**

CEO, Harvest Hope Food Bank

## Board of Directors

Henry Barton

Brenda Sheets

Brian Bonner

John Welsh

Davis Bourne

Denise Whittington

Jane Chao

Rick Wilder

Tushar Chikhliker

Drew Williams

Jones DuBose

George Shultz

Robert Gahagan

Erinn Rowe

Keith Heaton

Rhonda Mauldin

Gary Jones

Anne Matthews

Ben Kelly

Bobby McLain

Stephen Moore

Trey Ingalls

Ashley Rawl

Mark Bokesch

## Harvest Hope: A Staple of Support

In 2017, Harvest Hope Food Bank will celebrate 36 years of providing hunger relief to struggling individuals, families, seniors and children in South Carolina. Over the years, Harvest Hope has grown from a local grass-roots charity into an organization that now serves 20 South Carolina counties and provides for over 50,000 people every week. During fiscal year 2015-2016 Harvest Hope distributed 30,441,938 pounds of food across 20 South Carolina counties, enough food to make 23,416,875 meals.

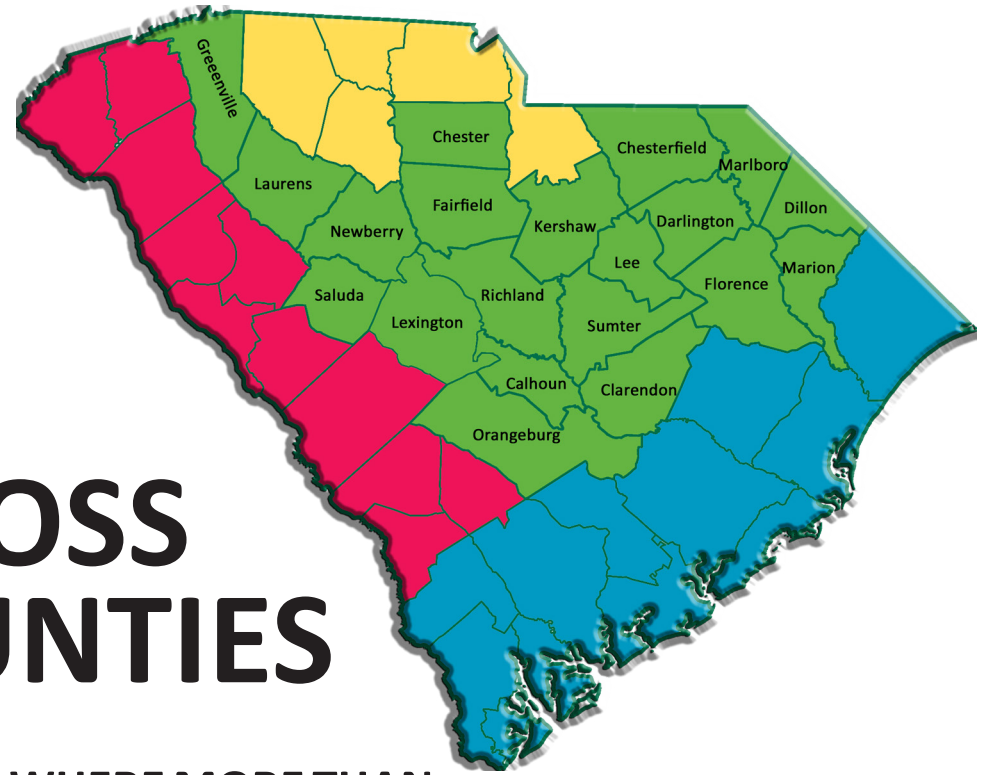
In 1981, several Columbia business leaders and members of the faith community gathered in a church with a shared vision to provide for their struggling and hungry neighbors in Columbia area communities. Since then Harvest Hope has increased its mission to meet hunger needs across our 20 county service area through partnerships with over 500 hunger relief service organizations, as well as our own individual programs such as our Emergency Food Pantries, Mobile Food Pantries and Senior and Children's Feeding programs.

From our simple and humble beginnings, Harvest Hope has continued to increase the scope of its operations and now provides food, comfort and hope to hungry individuals and families in the Midlands, Pee Dee and Greater Greenville regions of South Carolina.

Harvest Hope Food Bank is a proud partner with Feeding America, the largest charitable hunger relief organization in the United States. We are also a member of the South Carolina Food Bank Association and distribute USDA product, and serve as South Carolina's primary disaster response feeding organization. Feeding America is the nationwide network of more than 200 food banks that leads the fight against hunger in the United States of America. Together we can solve hunger.

# 23.4 MILLION MEALS PROVIDED

## ACROSS 20 COUNTIES



## WHERE MORE THAN 330,000

## PEOPLE GO HUNGRY

## INCLUDING 101,000 CHILDREN



## Harvest Hope's Hunger Relief Facilities

### Columbia Branch

Harvest Hope's original Columbia location in 1981 was in a building shared with the Columbia Housing Authority, before moving to Harden Street in 1985, relocating again in 1992 to a temporary facility on George Rogers Boulevard and then building our long-term base of operations on Shop Road in 1998. The Shop Road facility works with 240 member agencies to serve Calhoun, Chester, Fairfield, Kershaw, Lexington, Newberry, Orangeburg, Richland, Saluda and Sumter Counties.

### Pee Dee Branch

The Pee Dee location was opened in 1998 as our second location, serving some of the poorest counties in the state. Partnering with 157 member agencies, the Pee Dee Branch serves Chesterfield, Clarendon, Darlington, Dillon, Florence, Lee, Marlboro and Marion Counties.

### Greenville Branch

The Greater Greenville location has been serving Greenville and Laurens Counties since July 2007. The Greenville branch works with over 100 agencies and is the largest food pantry in the state by number of consumers served.

### Lexington Emergency Food Pantry

To meet the growing number of hungry people in the Midlands and help alleviate long lines at the Shop Road Emergency Food Pantry, Harvest Hope Food Bank opened its Lexington Emergency Food Pantry (EFP) in January of 2009.

## How Harvest Hope Food Bank Works

Food donations come to our doors, then processed by checking for expiration dates and damaged packaging before quickly going out to reach struggling families, individuals, seniors and children.

### **Step 1:**

Shelf stable food donations are delivered to Harvest Hope Food Bank.

### **Step 2:**

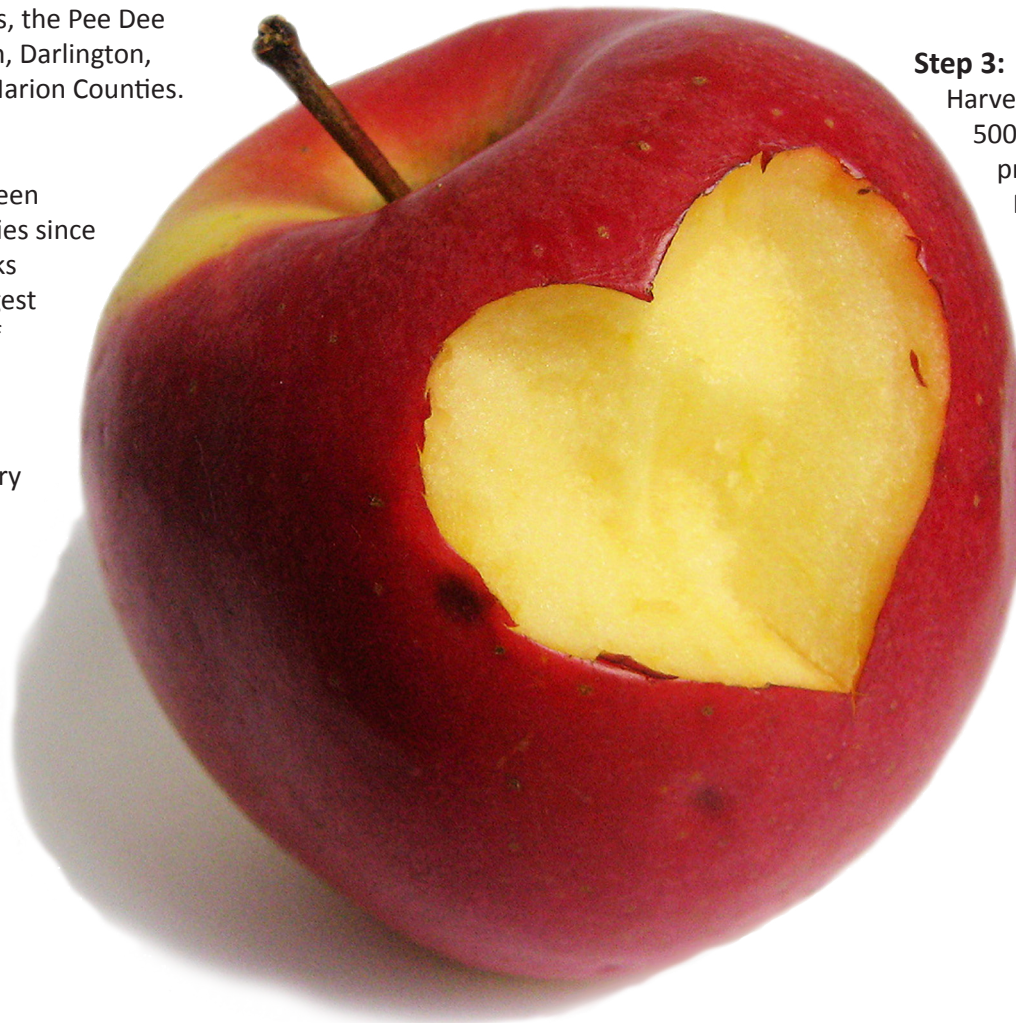
All donated food is hand sorted at Harvest Hope by staff and volunteers. All donated food must pass strict food safety guidelines before distribution.

### **Step 3:**

Harvest Hope partners with approximately 500 agencies, plus our own hunger relief programs, to bring meals to the community. Partner agencies include shelters, soup kitchens, day-care centers, civic organizations, churches, after school programs, summer feeding programs and other feeding missions.

### **Step 4:**

Harvest Hope provides immediate assistance at our own doorsteps at our Emergency Food Pantries, in addition to our Senior Feeding Programs, Children's Feeding Programs and Mobile Food Pantries.



## Donors Are the Foundation of Our Hunger Relief Mission

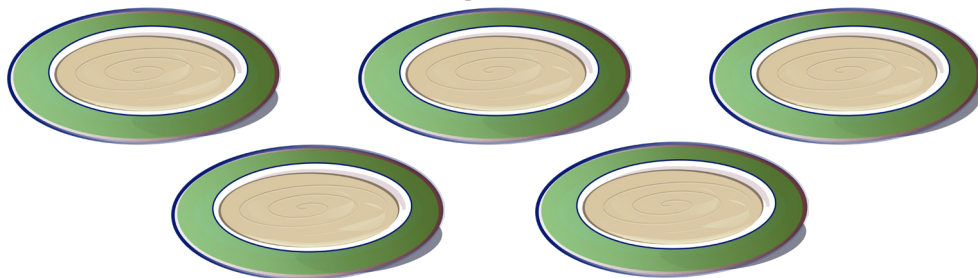
Harvest Hope distributed more than 30 million pounds of food last year, enough to provide more than 23 million meals to feed struggling people every week throughout 20 South Carolina counties. All of the food, funds and resources that went into this effort resulted from donations made through individuals and community partners.

Donations to Harvest Hope provide the resources to put food on the tables of seniors, children, families and individuals in our state's hardest hit pockets of poverty and communities. Along with Harvest Hope's service programs, donations support the efforts of faith-based congregations, pantries, shelters, soup kitchens, feeding missions and other organizations who often serve as the last hope against hunger for many who would have nowhere else to turn.

In FY16, more than 2,000 food drives and local community events provided canned goods and nonperishable food items needed to supplement fresh and frozen product donated by local farmers, retailers and food wholesalers. From small neighborhoods to city-wide televised food drives, concerned people within our 20 county service area helped feed their hungry neighbors.

Financial donations through individuals, corporations and grants allow Harvest Hope to expand operations and meet the increasing service demand. For every dollar of support, 98¢ goes directly to providing hunger relief through meals as well as information about services such as SNAP benefits and unemployment compensation for hungry people in South Carolina. Throughout FY16 every dollar donated to Harvest Hope Food Bank provided five meals.

# Just \$1 fills



## Our Volunteers Give the Valuable Gift of Their Time

Harvest Hope could not carry out its mission without providing a direct means of community involvement through our volunteer opportunities. Every day businesses, church groups, schools or individuals committed to giving back make a tangible difference to the community and in the lives of their neighbors by providing the most valuable gift they have – their time.

Our dedicated group of volunteers saves Harvest Hope on average \$1 million in salaries and benefits each year. Their generous gifts of time and hard work allow 98¢ of every dollar to go directly to providing food for hungry people in South Carolina. Perhaps the first and biggest benefit of volunteering for Harvest Hope is the satisfaction of seeing a direct impact in the lives of families suffering from hunger, as well knowing they are making a difference in their community. Volunteers come together from many different backgrounds to help ensure that our organization runs efficiently and with compassion for those in need.

Our dedicated group of volunteers saves Harvest Hope well over \$1 million in salaries and benefits each year.

There is no task too large or too small for Harvest Hope volunteers. They assist in a variety of ways at our branches including sorting through hundreds of thousands of pounds of food accumulated through food drives. Volunteers are the face of Harvest Hope in the community and participate in numerous special events including the USPS Letter Carriers food drive, Share Your Holiday, and Harvest Hope's signature auction event, Empty Bowls.

We encourage everyone in our community to learn the benefits of volunteering for Harvest Hope. Please visit [www.harvesthope.org/](http://www.harvesthope.org/) volunteer to learn more about our volunteer programs and opportunities. Individuals and organizations can easily sign up online for our orientation either at our facility, or for groups we can bring the orientation to you!

# \$1.7 million

THE IMPACT OF OUR VOLUNTEERS

## Children's Feeding Programs

We want to change the problem for one in four children under the age of five who goes to bed hungry every night in South Carolina. To make sure every child in our 20 county service area has the food they need to grow and learn we provide supplementary nutrition and meals to hungry children in our service area through two programs: Kids Cafe and Backpack.

Kids Cafe is an after-school charitable meal service program for children ages 6 to 18, and the Backpack program provides weekend hunger relief for children who have been identified as at risk of hunger. These programs provide food to low income children through a variety of community locations where children congregate—such as churches, after-school programs and public schools.

At three Kids Cafe locations, Harvest Hope provides food to partner agencies who in turn prepare hot meals and serve at-risk children. These sites provide the chance for children to participate in safe and structured after-school educational, recreational and social activities such as homework assistance, tutoring, and arts and crafts projects.

Harvest Hope's Backpack program ensures that children have a stable supply of nourishment to last through the weekend when they do not have access to in-school breakfast and lunches. Backpacks containing seven meals are distributed to children in participating schools. Guidance counselors and teachers at schools participating in the Backpack Program report that students who received backpacks through the program showed improvement in attendance, behavior and grades, and exhibited an overall improvement in motivation and attitude about school.

We currently seek funding and community partners to greatly increase our Backpack programs throughout our service area and ensure children have the nourishment they need to excel in school.

## Senior Feeding Programs

After a lifetime of work and preparing for their own future in addition to the well-being of their children, no senior citizen should have to go hungry. Yet South Carolina is currently 11th in the nation for the number of seniors who cannot provide for their hunger needs. One in ten South Carolina seniors face food insecurity, meaning they remain uncertain if they can meet their daily hunger needs.

Through the Commodity Supplemental Food Program (CSFP) Harvest Hope provides a monthly nutritious commodity box to low-income participants, the majority who are elderly people 60 years of age or older. CSFP food packages do not provide a complete diet, but are good sources of the nutrients typically lacking in the diets of the target population. Harvest Hope Food Bank, in partnership with the South Carolina Department of Social Services, has entered an agreement to accomplish the goals of the CSFP program in the following counties: Allendale, Barnwell, Fairfield, Greenville, Greenwood, Kershaw, Lexington, McCormick, Orangeburg, Richland, and Sumter. In FY 2015 Harvest Hope provided 37,945 senior food boxes to qualified participants in 11 counties in South Carolina.

In November of 2010 Harvest Hope launched a pilot program in Chesterfield County called Totes of Love. This grant-funded or sponsored program was created to expand the reach of our senior hunger efforts and currently provides senior hunger relief operating in Darlington, Florence, Lee, Marlboro and Marion counties. Twice a month, qualified seniors receive a Harvest Hope tote bag of nutritionally balanced food to supplement their food, including staple foods like canned meat, fruits and vegetables, dry beans, pasta or rice, peanut butter and bread. Harvest Hope distributed 3,000 Senior Totes in the Pee Dee through the grant funded Totes of Love Program, 27,993 CSFP senior boxes in the Midlands and 10,495 CSFP senior boxes in the Greater Greenville Area in FY 2014.

**784,000  
MEALS  
provided  
in our child  
feeding  
programs**

**74,000  
SENIORS  
fed in our  
senior  
feeding  
programs**

## Mobile Food Pantries

Harvest Hope's Mobile Food Pantries (MFP) deliver the gift of food to rural and remote pockets of poverty and provide the opportunity to directly engage with communities isolated from other forms of hunger relief. Each month when our trucks roll up to an MFP site they are welcomed by local partners, usually a faith-based organization such as members of a small church congregation, who help coordinate our efforts to provide food to their hungry neighbors.

The Mobile Food Pantry (MFP) program began in March 2002 to serve individuals in rural areas who have limited or no access to food pantries. There are many challenges for hungry people living in these remote areas, as most rural communities and some urban areas have insufficient numbers of outlets providing emergency food service to populations for whom transportation is an issue.

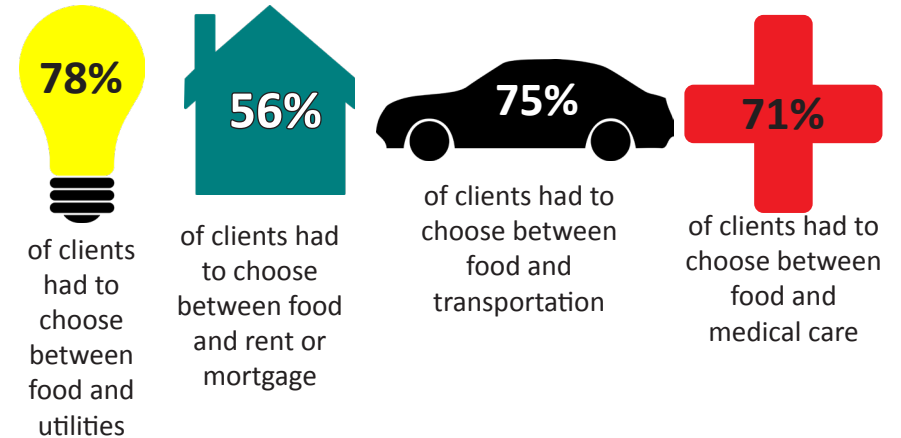
Harvest Hope coordinates with local service agencies to organize distribution through our Mobile Food Pantries. By filling our designated MFP boxes with food, loading them on a refrigerated truck and taking them to scheduled sites in remote rural areas, Harvest Hope is able to deliver food to those most in need. Our MFP trucks deliver the boxed food to specific locations where local volunteers operate registration stations, sign in clients and coordinate service delivery to individuals suffering from hunger. In addition to nonperishable product, fresh produce is also distributed on a seasonal basis.



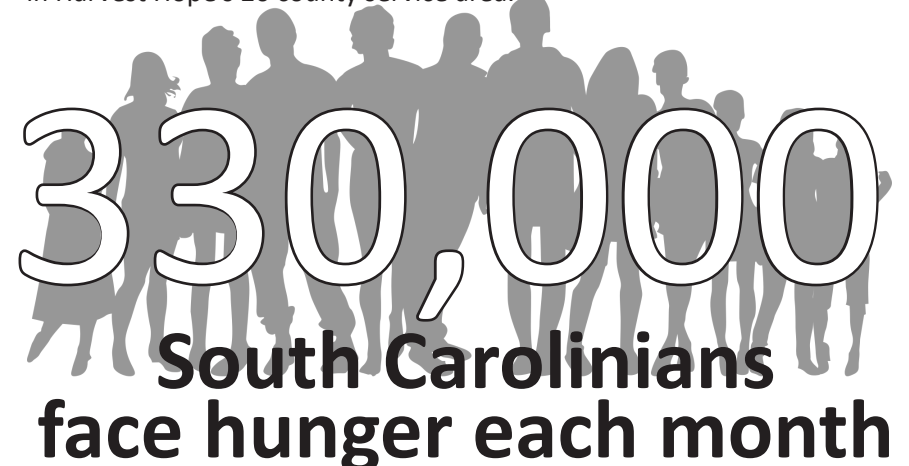
## Hunger Study and Map the Meal

Harvest Hope Food Bank was pleased to participate in gathering data for Hunger in America in 2014, the largest and most comprehensive study ever conducted in the United States of people seeking food assistance. The study was released in August 2014 and provided a detailed analysis of hunger and food insecurity in the United States, South Carolina, and in Harvest Hope's 20 county service area.

### Dilemmas Faced by Our Clients



Harvest Hope Food Bank was pleased to participate in gathering data for Hunger in America in 2014, the largest and most comprehensive study ever conducted in the United States of people seeking food assistance. The study was released in August 2014 and provided a detailed analysis of hunger and food insecurity in the United States, South Carolina, and in Harvest Hope's 20 county service area.





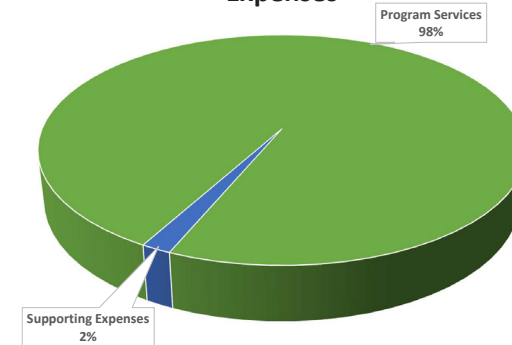
## Harvest Hope Food Bank, Inc. and Subsidiaries

### Consolidated Statement of Activities

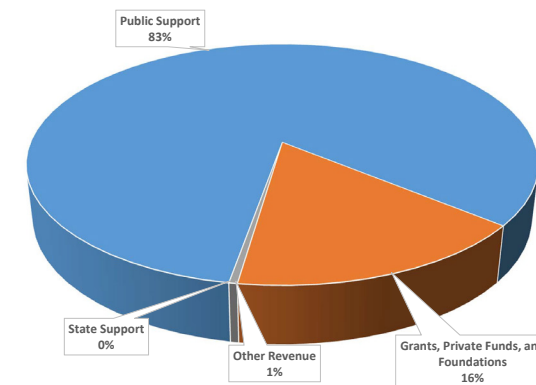
For the year ended June 30, 2016

	Unrestricted	Temporarily restricted	Total
<b>Support and revenues</b>			
Public support			
Shared maintenance contributions and fees	\$ 887,169	\$ -	\$ 887,169
Program income	632,244	-	632,244
Support from United Way	177,708	26,482	204,190
Support from public contributions	3,778,395	207,013	3,985,408
Special events	1,900,548	30,700	1,931,248
Donated services, supplies and equipment	18,632	-	18,632
Donated inventory product	37,451,126	-	37,451,126
Total public support	<u>44,845,822</u>	<u>264,195</u>	<u>45,110,017</u>
Grants, federal funds and private donations			
Donated inventory product	6,465,832	-	6,465,832
Reimbursed costs from SC Department of Social Services	448,200	-	448,200
Commodity Supplemental Food Program	197,940	-	197,940
Emergency Food and Shelter National Board Program	46,345	-	46,345
Community Development Block Grant	33,430	-	33,430
Other grants	42,727	255,000	297,727
Total grants, federal funds and private donations	<u>7,234,474</u>	<u>255,000</u>	<u>7,489,474</u>
Other revenue			
Interest income	1,570	-	1,570
Miscellaneous	27,483	-	27,483
Total other revenue	<u>29,053</u>	<u>-</u>	<u>29,053</u>
Total support and revenues	<u>52,109,349</u>	<u>519,195</u>	<u>52,628,544</u>
<b>Expenses</b>			
Program services			
Hunger and nutrition education	1,619,386	-	1,619,386
Agency food distributions	41,197,304	-	41,197,304
Emergency food box program	7,962,857	-	7,962,857
Total program services	<u>50,779,547</u>	<u>-</u>	<u>50,779,547</u>
Supporting services			
Fundraising	381,075	-	381,075
Management and general	416,829	-	416,829
Total supporting services	<u>797,904</u>	<u>-</u>	<u>797,904</u>
Total expenses	<u>51,577,451</u>	<u>-</u>	<u>51,577,451</u>
<b>Assets released from restrictions</b>	<u>1,195,654</u>	<u>(1,195,654)</u>	<u>-</u>
Change in net assets	1,727,552	(676,459)	1,051,093
<b>Net assets, beginning of year</b>	<u>2,354,567</u>	<u>1,247,099</u>	<u>3,601,666</u>
<b>Net assets, end of year</b>	<u>\$ 4,082,119</u>	<u>\$ 570,640</u>	<u>\$ 4,652,759</u>

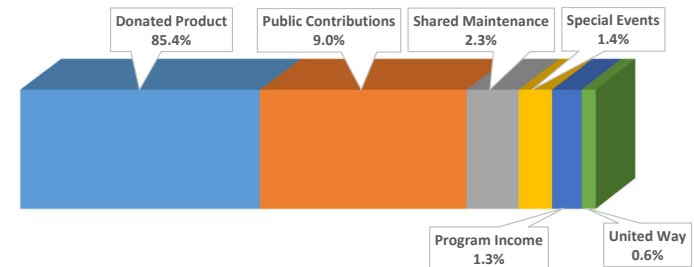
### Expenses



### Support and Revenues



### Public Support



## Agency Relations

Harvest Hope is the lifeline for over 500 agency partners who share our dedication to meet the hunger needs of families and individuals across our 20 county service area. We are the critical support for those who take our feeding mission directly to their neighbors in need in the most economically impacted communities and most concentrated pockets of poverty. They could not survive without us. Equally, it is largely through their partnerships that we distributed over 30 million pounds of food last year to feed approximately 50,000 people each week.

Many of these agencies are faith based; churches or other religious organizations who include hunger awareness as part of their outreach. Other partners include children's homes, women's shelters, homeless shelters, senior centers, soup kitchens, and other service outreach providers.

Partner agencies must qualify as non-profit organizations and have as part of their mission a dedication to service populations experiencing hunger. They must be 501(c)(3) organizations registered with the Secretary of State and Internal Revenue Service and agree to the same standards established by Feeding America which we comply with. They must, in some aspect, serve the hungry in their community and help those for whom the need for food is critical. Without us, many of these organizations would be forced to shut their doors and cut off the only means of emergency food to those suffering from hunger in their area.

## Harvest Hope Food Bank Partner Agencies

*(Listed Alphabetically by County)*

### \*\*ALLENDALE COUNTY

CSFP-St Marks Baptist Church  
CSFP-Allendale County Council on Aging

### \*\*BARNWELL COUNTY

CSFP-Faith Deliverance Center of Praise-Blackville  
**CALHOUN COUNTY**

Faith Baptist Church  
Gethsemane Baptist Church  
Whole Truth Victory Tabernacle Church  
Temple of God

### CHESTER COUNTY

BackPack Great Falls Elementary  
Christ Central Ministries, Inc Chester  
Trinity Baptist  
Mt. Moriah Sr. Missionary  
Purity Presbyterian Church Food Pantry  
Turning Point of Chester

### CHESTERFIELD COUNTY

Fisher Hill Community Baptist Church  
Lois G McArn Community Ministry, Inc.  
New Hope Ranch  
Oro United Methodist Church  
Pageland Seventh Day Church Community Services

### CLARENDON COUNTY

BackPack St. Paul Elementary  
Clarendon County DSN Board  
Deliverance Outreach Ministries, Inc.  
Disaster Clarendon County  
Disaster Oaks AME Church in Summerton  
Greater Laurel Hill AME Church  
House of Prayer Outreach Ministry  
Howard Chapel AME Church  
Macedonia Baptist Church of Manning, Inc  
Manning Deliverance Temple

Maranatha Seventh Day Adventist  
Wisteria Way Senior Housing  
Mt. Calvary FBHC  
New Start Community Church of Nazarene  
Paxville Community Development Center  
Reesville AME Church  
St. Mary's Our Lady of Hope Catholic Parish  
Turbeville Children's Home formerly Free Will  
United Ministries of Clarendon County

### DARLINGTON COUNTY

All For Christ Ministries  
Anointed Outreach Ministries  
BackPack Gum Branch Church  
BackPack Rosenwald Elementary  
BackPack Washington Street Elementary  
BackPack West Hartsville Elementary  
Bethel AME - Darlington  
Bethesda Baptist Church  
Cherry Grove Missionary Baptist Church  
CSFP - All for Christ #16-001  
Embark Lay Ministries  
Fatherhood and Families Engagement  
First Baptist Church of Pine Ridge  
Flat Creek Baptist Church  
Gum Branch Baptist Church  
HRC Crusade for Christ Ministries, Inc  
Mary Magdalene Church  
Mt. Elon Baptist Church  
Nazareth Apostolic Church  
New Visions Community Development Corp  
Pleasant Grove Baptist- Darlington  
St. John Wesley UMC Charge  
St. Mark Holiness Church  
StrongTower Outreach Ministries  
Totes of Love-Darlington Senior Center  
Totes of Love-Hartsville Senior Center  
Way of the Cross No. 2  
Wesley UMC-Hartsville Soup Kitchen

### DILLON COUNTY

Bethel AME Church-Dillon  
Bibleway Tabernacle Church, Inc.  
CSFP - Bethel AME Church-Dillon  
CSFP - Visional Educational Center  
Helping Hands-Johnson Foundation  
Manning Baptist Church  
Miracle Temple Family Fellowship  
New Memorial Temple of Christ  
Outreach Family Fellowship-Dillon  
Vision Educational Center

### FAIRFIELD COUNTY

BackPack Fairfield Middle School  
CSFP-Fairfield County Council on Aging  
CSFP-Good Samaritan House  
CSFP-Macedonia Baptist  
Little River Baptist Church  
Ebenezer AME  
Good Samaritan House-Christ Central  
Macedonia Baptist Church-Ridgeway  
Mt. Olive Baptist  
Senior Produce-Fairfield County  
St. Luke Baptist Church

### FLORENCE COUNTY

4 Your Soul Outreach  
Antioch Fellowship Church  
BackPack Lake City Early Childhood Center  
BackPack Main Street Elementary  
BackPack Wallace-Gregg Elementary  
Believers Holiness Conference  
Bethel Apostolic Church  
Bible Way Temple of Faith  
Bread of Life Community Development Corporation  
Charity Church  
Christ Temple Holiness Church  
Christian Love Tabernacle  
CSFP - White Chapel FreeWill Holiness  
Cumberland United Methodist Church  
Disaster Florence County  
Disaster Willie & Betsy  
Divine Destiny Ministry  
Edna Mae McCullough Foundation  
Elizabeth Baptist Church  
Emergency Food Pantry-HHFB (Pee Dee)  
Evangelist Holiness Church  
Faith Kingdom Builders  
Florence 1st Seventh Day Adventist  
Friends United, Inc.  
Golden Gate Holiness Church  
Good News Deliverance Temple Holiness  
Goodland AME Church  
Gospel Temple Worship Center  
Greater Mt Sinai Deliverance Holiness  
Greater St. James AME Church  
Greenwood Baptist Church  
Holy Ghost Deliverance Temple  
House of God - Church of the Living God  
Kids Cafe-Majority Baptist  
Kingdom Life International Church Inc  
Majority Baptist Church  
Meadow Prong Missionary Baptist Church  
Monumental Baptist Church  
Mt. Calvary Apostolic Church  
Mt. Zion Chapel Baptist Church  
New Deliverance Outreach Ministry  
Oak Grove AME Church  
Olive Grove Baptist Church  
Outreach Family Fellowship-Florence  
Pentecostal Temple COGIC  
Restoration Deliverance Outreach  
Resurrection Restoration Center for the Homeless  
Salvation Army - Florence  
Savannah Grove FWB Church  
Southern Calvary Baptist Church  
St. Anne Catholic Church  
St. Anthony's Catholic Church  
St. Jude Apostolic Church  
St. Luke UMC Church  
St. Peter Africa FWB Church  
Stepping Stone Holiness Church  
The Inner Court Apostolic Church in Jesus Christ  
The Manna House  
The Naomi Project  
Timmonsville Church of Christ  
Totes of Love-White Chapel Free Will Holiness  
Truth Pentecostal Holiness  
Victory Harvest Church

Victory Harvest Church  
Wesley Chapel UMC  
White Chapel Freewill Holiness Church  
Willie & Betsy Bradford Comm. Outreach  
Zion Community Action Agency

## GREENVILLE COUNTY

Abundant Life Church  
AID Upstate  
Antioch Missionary Baptist Church  
BackPack AJ Whittenburg  
BackPack Alexander Elementary  
BackPack Armstrong Elementary  
BackPack Berea Middle  
BackPack Chandler Creek Elementary  
BackPack East North Street Elementary  
BackPack Fuller Normal School  
BackPack Grove Elementary  
BackPack Kerns Elementary  
BackPack Legacy Charter  
BackPack Southside High  
BackPack Tanglewood Elementary  
BackPack Welcome Elementary  
BackPack Westcliff Elementary  
Bethlehem Baptist Church of Greenville  
Bethlehem Baptist Church-Simpsonville  
Cedar Grove Baptist Church  
Cherrydale Place Baptist  
Child Evangelism Fellowship-Taylor's  
Christian Recovery Houses of Greenville (CRH)  
Cliff's Residents Outreach, Inc.  
Crosspoint Assembly Ministries  
Crossroads Group Home  
CSFP-Bethlehem Baptist Church  
CSFP-Cedar Grove Baptist  
CSFP-Foothills Family Resources  
CSFP-Garden Apartments  
CSFP-Greenville Summit  
CSFP-HHFB Greenville EFP  
CSFP-Israel Metropolitan CME Church  
CSFP-Landwood Ridge Apartments  
CSFP-Monaghan Baptist Church  
CSFP-Mt Grove Baptist Church  
CSFP-Mt View Baptist Church  
CSFP-Renfrew Baptist Church  
CSFP-Total Empowerment  
CSFP-Towers East  
CSFP-Valley Brook Baptist  
CSFP-Victor Baptist Church  
CSFP-Washington Avenue Church of God  
Eastside Baptist Center  
Ebenezer Welcome Baptist Church  
Emergency Food Pantry-HHFB (Greater Greenville)  
Extended Hands of God Servants  
Faith Temple  
First Baptist Church of Conestee  
Freedom Within Walls  
From God to You Ministries, LLC  
Global Revival Center  
God's Pantry - Greenville  
Greater New Hope Baptist Church  
Highland Baptist Church  
Iglesia Tabernaculo Cristo Redentor  
James Monroe Mission-Trinity UMC  
Kingdom Life Church

Little Zion Baptist Church  
Living Branch Ministries Food Bank  
Locust Hill Baptist Church  
Long Branch Baptist Church  
Marietta First Baptist Church  
Meals on Wheels-Greenville  
Miracle Hill Ministries  
Monaghan Baptist Church  
Mountain Grove Baptist Church  
Mountain View Baptist Church  
Mountain View Community Church  
Mt. Zion Baptist Church-Fountain Inn  
New Life Baptist Church  
Newstart Church- Bread Of Life  
North Greenville Food Crisis Ministry  
Our Lady of the Rosary/Society of St. Vincent  
Pendleton Place  
Phillis Wheatley Community Center  
Piedmont Emergency Relief Center  
Poplar Spring Baptist Church  
Potters Clay Fellowship  
Redemption World Outreach Center  
Renfrew Baptist Church  
Resurrection Power Ministries  
Safe Harbor, Inc  
Salvation Army-Greenville  
Set Free Christian Fellowship  
Skypointe Church  
Slater Marietta HHS dba Foothills Family Resources  
Solomon's Temple Church  
Star Faith Church  
The Samaritan House of Greenville, Inc  
Trinity Fellowship Assembly of God  
Trinity Way Baptist Church  
Washington Avenue Church of God  
Washington Baptist Church  
West Gantt First Baptist Church  
Women Reaching Out, Inc.  
Woodmont United Care Assoc

## \*\*GREENWOOD COUNTY

CSFP-Foodbank of Greenwood County  
CSFP-Cambridge Apartments  
CSFP-Greenwood Housing Authority  
CSFP-Ninety Six- Train Depot Senior Center  
CSFP-Tabernacle of Faith

## KERSHAW COUNTY

BackPack Bridge Creek Elementary  
BackPack Dolby Mills Elementary  
Concord Baptist Church  
CSFP-Greater Faith & Joy Tabernacle  
CSFP-Mt.Pilgrim Baptist  
CSFP-St. Matthew Baptist Church  
Fort Clark Baptist Church  
Gaines Baptist Church  
DeKalb Baptist Church  
Divine Faith Church  
Senior Produce-Kershaw  
St. Matthew Baptist Church

## LAURENS COUNTY

AMI kids Piedmont  
Christ Central Ministries, Inc.  
God's Pantry - Laurens  
Laurens County Food Ministry, Inc.

Summer Feeding (SFS)- Christ Central Joanna  
Thornwell Home for Children  
United Ministries of Clinton  
Wayside Baptist Church

## LEE COUNTY

Bishopville Church of Christ  
CSFP - Lee County Council on Aging #31-001  
Gethsemane Apostolic Church  
King Emmanuel Baptist Church  
Lee County Cooperative Ministry  
Lynchburg Outreach Ministries  
Mt. Calvary Missionary Baptist Church  
Mt. Pleasant AME Church  
St. Paul United Methodist Church-Elliot  
St. Paul United Methodist Church-Wisacky  
Totes of Love-Lee County Council On Aging

## LEXINGTON COUNTY

BackPack B & L Elementary  
BackPack B.C. Grammar #1  
BackPack Batesburg Primary  
BackPack C. A. Taylor Elementary  
BackPack Congaree Wood Elementary  
BackPack Davis Elementary School  
BackPack FOCUS  
BackPack Forts Pond Elementary  
BackPack Gilbert Elementary  
BackPack Gilbert Middle  
BackPack Gilbert Primary  
BackPack Lake Murray Elementary  
BackPack Lexington Elementary  
BackPack Lexington Middle  
BackPack Meadow Glen Middle  
BackPack Midway Elementary  
BackPack Mt Horeb UMC  
BackPack New Providence Elementary  
BackPack Pelion Elementary  
BackPack Pleasant Hill Middle  
BackPack R.H. Fulmer Middle  
BackPack Rocky Creek Elementary  
Bethel Christian Camp  
Brookland Baptist Church  
Calvary Chapel of Lexington  
Central Midlands Trans. Retreat-Christ Central  
Chapin "We Care" Center  
Christian Life Assembly  
Christian Ministry Center  
Church of Christ Sunset Blvd  
Community Christian Fellowship  
Crossroads World Outreach Center(CWOC)  
CSFP-AHEPA 284 II  
CSFP-Ebenezer Pentecostal Holiness Church  
CSFP-First Calvary Baptist Church  
CSFP-God's People In Service  
CSFP-LCRAC - Batesburg Leesville Senior Center  
CSFP-LCRAC - Lexington Senior Center  
CSFP-LCRAC - Pine Ridge Senior Center  
CSFP-LCRAC - Swansea Senior Center  
CSFP-LCRAC - Tricity Senior Center  
CSFP-LCRAC -Pelion Senior Center  
CSFP-Lexington EFP  
CSFP-Mt. Pleasant Swansea Outreach Foundation  
Disaster HHFB Lexington EFP  
Disaster Lexington County  
Ebenezer Pentecostal Holiness Church  
Emergency Food Pantry-HHFB (Lexington County)  
First Calvary Baptist Church  
God's People In Service  
Kids Cafe-Park North  
Lexington County Community Health Fair  
Mental Health America - Bridges Clubhouse  
Mission of Hope Ministries  
Holy Gospel Tabernacle  
Mt. Moriah AME Church  
Mt. Pleasant Swansea Outreach Foundation  
Northside Baptist - Mission Columbia  
Oasis Christian Fellowship Church  
Providence Missionary Baptist Church  
River of Life Christian Fellowship  
Sandy Grove Missionary Baptist Church  
School Pantry - Swansea High School  
Sharing God's Love  
Sistercare - Lexington I Shelter

BackPack Forts Pond Elementary  
BackPack Gilbert Elementary  
BackPack Gilbert Middle  
BackPack Gilbert Primary  
BackPack Lake Murray Elementary  
BackPack Lexington Elementary  
BackPack Lexington Middle  
BackPack Meadow Glen Middle  
BackPack Midway Elementary  
BackPack Mt Horeb UMC  
BackPack New Providence Elementary  
BackPack Pelion Elementary  
BackPack Pleasant Hill Middle  
BackPack R.H. Fulmer Middle  
BackPack Rocky Creek Elementary  
Bethel Christian Camp  
Brookland Baptist Church  
Calvary Chapel of Lexington  
Central Midlands Trans. Retreat-Christ Central  
Chapin "We Care" Center  
Christian Life Assembly  
Christian Ministry Center  
Church of Christ Sunset Blvd  
Community Christian Fellowship  
Crossroads World Outreach Center(CWOC)  
CSFP-AHEPA 284 II  
CSFP-Ebenezer Pentecostal Holiness Church  
CSFP-First Calvary Baptist Church  
CSFP-God's People In Service  
CSFP-LCRAC - Batesburg Leesville Senior Center  
CSFP-LCRAC - Lexington Senior Center  
CSFP-LCRAC - Pine Ridge Senior Center  
CSFP-LCRAC - Swansea Senior Center  
CSFP-LCRAC - Tricity Senior Center  
CSFP-LCRAC -Pelion Senior Center  
CSFP-Lexington EFP  
CSFP-Mt. Pleasant Swansea Outreach Foundation  
Disaster HHFB Lexington EFP  
Disaster Lexington County  
Ebenezer Pentecostal Holiness Church  
Emergency Food Pantry-HHFB (Lexington County)  
First Calvary Baptist Church  
God's People In Service  
Kids Cafe-Park North  
Lexington County Community Health Fair  
Mental Health America - Bridges Clubhouse  
Mission of Hope Ministries  
Holy Gospel Tabernacle  
Mt. Moriah AME Church  
Mt. Pleasant Swansea Outreach Foundation  
Northside Baptist - Mission Columbia  
Oasis Christian Fellowship Church  
Providence Missionary Baptist Church  
River of Life Christian Fellowship  
Sandy Grove Missionary Baptist Church  
School Pantry - Swansea High School  
Sharing God's Love  
Sistercare - Lexington I Shelter

## \*\*MCCORMICK COUNTY

CSFP-McCormick County Senior Center  
**MARION COUNTY**  
Bethel Word Church

Canaan Land Revival Temple  
Grace Chapel Holiness Church  
Harvest Time Evangelistic Center  
Macedonia UMC-The Manna House  
Marion Church of God  
Monument of Faith Christian Minisitries  
Mt. Olive SDA Church-Marion  
Mullins First Baptist Church  
New Birth Deliverance Ministry  
New Ebenezer AME Church-Mullins  
St. James AME Church-Marion  
Tabernacle AME Church  
Totes of Love-Bethel Word Church

## **MARLBORO COUNTY**

Advisory Council Chesterfield/Dillon/Marlboro  
AMKids Bennettsville, Inc.  
BackPack Bennettsville Intermediate  
BackPack Blenheim Elementary  
BackPack Blenheim Middle  
BackPack Clio Elementary  
BackPack Clio Middle  
BackPack McColl Elementary  
BackPack McColl Middle  
BackPack Wallace Elementary  
Bread of Life Food Pantry  
EL-Jireth Pentecostal Apostolic Church  
Faith Tabernacle Pentecostal Holiness Church  
Level Green UMC- Bennettsville Circuit 1  
McColl Church of God  
McColl Pentecostal Fire-Baptized Holiness Church  
New Hill Freewill Church  
Sandy Grove Missionary Baptist Church  
Totes of Love-Marlboro Council On Aging  
Word Of Life Christian Center Ministries

## **NEWBERRY COUNTY**

BackPack Boundary Street Elementary  
BackPack Newberry Middle  
Boys Farm, Inc.  
Living Hope  
Nance Forest Apts  
Whitmire Community Center

## **ORANGEBURG COUNTY**

BackPack Rivelon Elementary  
BackPack Whittaker Elementary  
Bethel AME Church  
Brown Chapel AME - Cameron  
CCMO -Cooperative Church Ministries  
Christ Is the Answer SDA Church  
CSFP-CCMO  
CSFP-Cooperative Ministry of North Inc  
CSFP-Faith Deliverance Center Of Praise  
Disaster - Salvation Army Orangeburg  
Disaster Eutawville Fire Dept  
Disaster Orangeburg County  
Faith Deliverance Center of Praise  
First Baptist of Ellore-Loaves of Love  
Greater Unity AME Church  
Hope Lutheran Outreach Ministries  
Abraham Way Senior Housing  
Bowman Temple Church  
Canaan Land Church  
Chapel Hill Baptist Church

Faith Deliverance Center  
Helping Hands Outreach Ministry  
Live Oak AME  
Mt. Olive AME church  
Rivelon Elementary School  
Rock Hill AME  
St Ann (Santee)  
Red Hill Missionary Baptist Church  
Refuge Temple Our Lord & Savior Jesus  
Solid Rock Outreach Ministries  
St. Andrews UMC - Shepherd's Ministry/Lunch  
The Samaritan House of Orangeburg, Inc  
Williams Chapel AME Church

## **RICHLAND COUNTY**

Acts Metro  
Alston Wilkes Society Veterans Home  
BackPack AJ Lewis Greenview  
BackPack Alcorn Middle  
BackPack Bradley Elementary  
BackPack Brennan Elementary  
BackPack Burton Pack Elementary  
BackPack Columbia School for the Inquiry  
BackPack Dent Middle  
BackPack Dutch Fork Elementary  
BackPack E. E. Taylor  
BackPack Forest Heights Elementary  
BackPack H.B.Rhame  
BackPack Hand Middle  
BackPack JP Thomas Elementary  
BackPack LW Condor Elementary  
BackPack Polo Road Elementary  
BackPack South Kilbourne Elementary  
BackPack Summitt Parkway Elementary  
BackPack Webber Elementary  
BackPack Windsor Elementary  
Belvedere Early Learning Center  
Bethlehem Baptist Church  
Capital City Church  
Centennial A.R.P. Church  
Christ Central Ministries, Inc.-Columbia  
Christian Assistance Bridge  
Clark Estates of Columbia  
Columbia Metro Baptist Assoc. Ministries  
CSFP-AHEPA 284  
CSFP-Brown Chapel Senior Wellness  
CSFP-Christian Assistance Bridge  
CSFP-Christopher Towers  
CSFP-Christus Victor Lutheran Church  
CSFP-Columbia Housing - Highrise  
CSFP-Columbia Housing-Communities  
CSFP-DSS Richland Cty(Adult Protective Services)  
CSFP-Ensor Forest Apartments  
CSFP-Finlay House  
CSFP-Lourie Center  
CSFP-Mt. Nebo Baptist Church  
CSFP-Reid Chapel A.M.E.Church  
CSFP-Richland County EFP  
CSFP-Woods Edge Apartments  
Disaster - Virginia Wingard  
Disaster Christ Central Ministries, Inc  
Disaster HHFB Richland EFP  
Disaster Temple of Yahshua-Richland County-Hopkins  
Disaster-Dorn VA

Disaster-Richland County  
Disaster-Salvation Army-Columbia  
Disaster-SC State Guard Olympia Armory  
Disaster-The Core Church in Lower Richland  
Dorn VA -Angel Food Pantry  
Emergency Food Pantry-HHFB(Richland County)  
Faith Hope and Charity Deliverance Temple Church  
First Nazareth Baptist/Greater Waverly Foundation  
God's Storehouse  
Good Shepherd Holiness Church  
Good Shepherd- Tuesday Rockers Senior Program  
Goodwill Baptist Church  
Grace Christian Ministries  
Grace Church-Hope Project  
Kids Cafe - St. Andrews Baptist Church  
Killingsworth Inc.,  
Kingdom Reapers Ministry  
Koinonia Food Pantry  
L.R.A.D.A.C.  
Lutheran Family Services-Angels House  
Lutheran Family Services-Barger Hill  
Lutheran Family Services-Stone Haven LCS  
Midlands Community Development Corp.  
Columbia Housing Authority  
SC Youth Challenge  
New Ebenezer Baptist Church - Columbia  
P.E.P. SR Ministry-Unity Missionary Bapt  
Palmetto Aids Life Support Services  
Pleasant Grove Baptist Mission - Gadsden  
Pontiac Church of Christ  
Produce - Richland County  
Providence Home  
Red Hill Baptist Church - Gadsden  
Rehoboth United Methodist Church  
Reid Chapel AME Church-Columbia  
Restoration  
Restoration Life Ministries  
Round Top Baptist Church  
Salvation Army - Columbia  
Senior Produce-Richland County  
Senior Resources  
Sistercare, Inc.  
Sistercare, Inc.  
St. John Baptist Church  
St. John's Episcopal Church  
St. Vincent DePaul - St. Joseph  
Stepping Stones Ministry/Elmwood Ave COG  
Temple of Yahshua  
True Vine Outreach Ministry  
Victory Ranch  
Virginia Wingard Memorial UMC  
Washington Street UMC Soup Kitchen  
Wiley Kennedy Family Life Center

## **SALUDA COUNTY**

BackPack Hollywood Elementary  
BackPack Saluda Elementary  
BackPack Saluda Primary  
Christ Central Ministries-Saluda  
Catholic Charities of Midlands  
Riverside Community Development Center  
**SUMTER COUNTY**  
BackPack Cherryvale Elementary

BackPack Croswell Drive Elementary  
BackPack Kingsbury Elementary  
BackPack Lemira Elementary  
BackPack Pocalla Springs Elementary  
BackPack Rafting Creek Elementary  
BackPack Willow Drive Elementary  
Berea Community Service Center  
Bethesda Church of God  
Calvary Baptist Church-Pinewood  
Community Missionary Charity Organization  
CSFP-Calvary Missionary Baptist Church  
CSFP-Pine Grove Baptist Church  
CSFP-RACC  
CSFP-Sumter Senior Center/ Shiloh St John Center  
CSFP-Sumter Senior Center-Delaine Center  
CSFP-Sumter Senior Service- Activity Center  
Disaster - Salvation Army - Sumter  
Disaster Christian Charities of Sumter  
Disaster Sumter County  
Disaster - Bethesda COG  
Disaster - Jehovah Missionary  
Disaster Westend Community Church  
Ebenezer AME Church  
Jehova Missionary Baptist Church  
Lab's Helping Hands  
New Bethel Missionary Baptist  
New Birth Holiness Church  
Our Brother's Keeper Society  
Pine Grove Baptist Church - Sumter  
Senior Produce Sumter County  
Sumter Behavioral Health Services  
Westend Community Church  
Youth Academy Inc

## **WILLIAMSBURG COUNTY**

Disaster - Williamsburg County  
**HORRY COUNTY**  
Disaster - Horry County

**\*\* Outside our 20 county service area**



In Harvest Hope's 20 County Territory

# 100,000 CHILDREN

Face Hunger on a Daily Basis

MEMBER OF  
**FEEDING**  
AMERICA



**HARVEST  
HOPE**  
FOOD BANK

Columbia • Florence • Greenville  
Serving 20 SC Counties  
PO Box 451 Columbia, SC 29202